



—●●●—*Kailash*—●●●—

PALM STREET



An Opus inscribed in the finest facets of quality, unraveling,
overwhelming, brilliance even as you make your way to the entrance,
all 72 modern luxury residences comprising 2 bedroom to 3 bedroom
with basement car park as well as beautiful landscape
are crafted in grand fashion on a sprawling ground
exceeding 3800 sq. yard to translate exclusivity as part of your life.
A creation preceding the highest standard, the bona fide essence of
luxury is truly omnipresent in "Kailash Palm Street".







A name synonymous
with timeless panache
that has gone
beyond luxurious living.

It's the
presence in the
highest living.



Opulence in surfeit, the remarkably scenic premises ingeniously accenting the architectural marvel of pristine features, this exquisite habitat is set to thrive with the modernity of high society. Yet lush with family belonging, every bit of the 10 storey luxurious living spells the lulling comfort of home assembled with communal facilities that includes a garden path, gymnasium and steam bath. Life is at the pinnacle where only the finest reside.

- ▶ More Than 60% Open Space
- ▶ Splendid Main Entrance
- ▶ Excellent Landscaping
- ▶ Ample Parking Space
- ▶ Hi-Speed Lifts
- ▶ 24x7 Water Supply
- ▶ 100% Power Backup
- ▶ Intercom Facility
- ▶ Two Tier Securities
- ▶ Wi-Fi Connectivity





Opulence in surfeit, the remarkably scenic premises ingeniously accenting the architectural marvel of pristine features, this exquisite habitat is set to thrive with the modernity of high society. Yet lush with family belonging, every bit of the 10 storey luxurious living spells the lulling comfort of home assembled with communal facilities that includes a garden path, gymnasium and steam bath. Life is at the pinnacle where only the finest reside.

- ▶ More Than 60% Open Space
- ▶ Splendid Main Entrance
- ▶ Excellent Landscaping
- ▶ Ample Parking Space
- ▶ Hi-Speed Lifts
- ▶ 24x7 Water Supply
- ▶ 100% Power Backup
- ▶ Intercom Facility
- ▶ Two Tier Securities
- ▶ Wi-Fi Connectivity



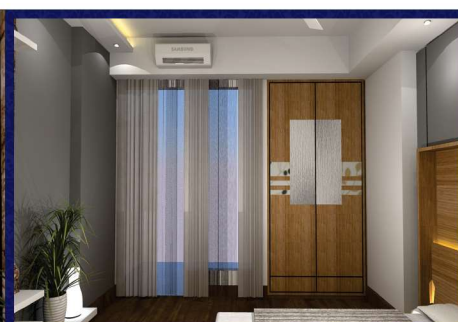




A home that feels like a vacation is what we have sprouted for you. Where urban lifestyle is set through a lush green fluid space and a landscape that you'll like to wake up to each day and come back, sip a cup of tea with during the sunset. Soothing indoors with every inch of comfort and relaxation is what homes should be like, where the child has his space just like the parent would. We offer you the home of your expectations; a union of nature with contemporary lifestyle.

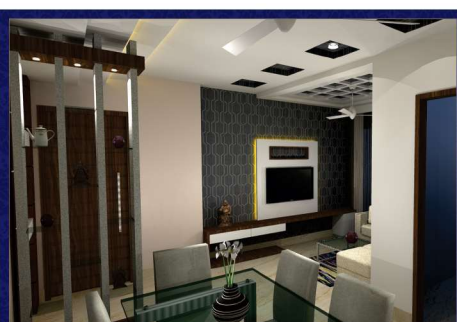
A blend of colors and hues sets the mood in tune to the aura of the interiors designed and brings a soothing effect. There are ample windows and glasses that let ventilation and considerate amount of light become the most essential aspect of the homes.

- ▶ Spacious Balcony with Bedrooms
- ▶ Stain free Floorings & Finishing
- ▶ Italian Modular Kitchen
- ▶ Wardrobes
- ▶ Light Fittings
- ▶ False Ceiling in Drawing, Dining Room & Bedrooms



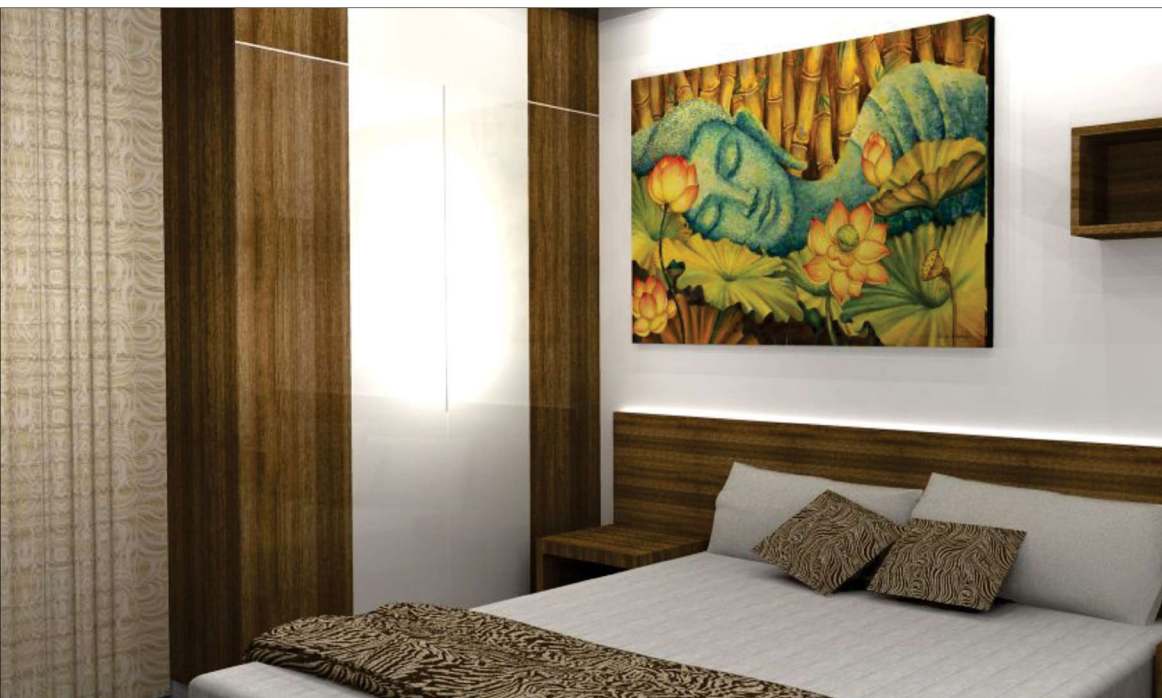
Master Bedroom





 Drawing & Dining Room 



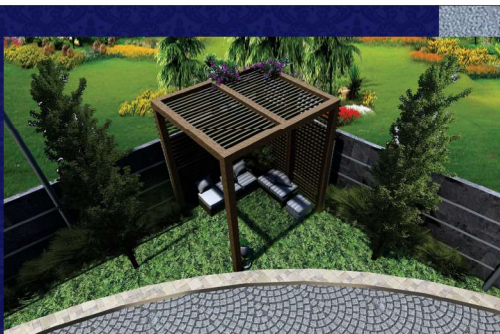


Other Bed Rooms
& Balcony





Where prestige is omnipresent,
it is the harmonious blend of elements
embracing you to bring peace
to the mind, body and soul !



OPEN GREEN AREA WITH SIT OUTS



Gate : Entry / Exit



Kids Swimming Pool



Club Spaces

What's better than relaxing in bed on a Sunday?

We'll answer that for you!

A Sunday afternoon with your kids and family at a rejuvenating space as close as home sounds indubitably better! Starve away excuses and laziness as you hit the gym that's probably a few yards away.

Kailash Palm Street gives you **all** the reasons to celebrate the tiniest of happiness and get together to laugh away every day with a varied set of amenities for the entire family. We understand how kids are usually left out from a kitty party or a gym retreat, and so we have made sure they too get their own space.

- ▶ Kids Swimming Pool
- ▶ Club with Gymnasium
- ▶ Spa & Sauna
- ▶ Meditation Area
- ▶ Conference Room
- ▶ Kids Play Area
- ▶ Table Tennis Room
- ▶ Basket Ball Court (Single Basket)
- ▶ Card Room



Gymnasium



Basket Ball Court



Kids Play Area



Billiards Room



Table Tennis



Card Room



Type -1 - 3 BHK
Super Area - 1602 Sq.ft



Type -2 - 2 BHK
Super Area - 1305 Sq.ft



Type -3 - 2 BHK
Super Area - 1305 Sq.ft



Type - 4 - 3 BHK
Super Area - 1602 Sq.ft



Type -5 - 3 BHK
Super Area - 1602 Sq.ft



Type - 6 - 3 BHK
Super Area - 1670 Sq.ft



Type - 7 - 2 BHK
Super Area - 1305 Sq.ft



Type - 8 - 2 BHK
Super Area - 1270 Sq.ft



TECHNICAL SPECIFICATIONS »

STRUCTURE	Earthquake Resistant RCC framed structure as per Seismic Zone Specification with solid block/brick masonry walls	TOILETS	Chrome plated fittings of Jaquar/Equivalent make Wash basins and EWC's of Reputed Jaquar/ Equivalent make PVC lines for rain water, soild & waste disposal Food Grade CPVC / UPVC lines for water supply
FIRE FIGHTING	As per prevalent ISI Code		
DOOR		PAINTING	
Main/Bedroom Door	Veneered European Style Flush /Modular Door Shutter	Internal Walls & Ceilings	Premium Plastic Emulsion Paint
Toilet Door	Veneered European Style Flush/ Modular Door Shutter	External Finish	Weather proof Apex – Asian/Equivalent
External Doors to Balcony	UPVC Frames -2 track sliding shutter system with premium Hardware with provision of mesh	POP & FALL CEILING	
WINDOWS	UPVC Frames-2 track shutter system with premium hardware with provision of mesh	Fall Ceiling POP	In Drawing & Dinning room with designer down lights POP punning in all walls & Roofs in all Bedrooms
VENTILATOR	UPVC Frames / Anodized Aluminum fixed unit	LIFT	Automatic lifts of SS Finish by ECE with Premium Grade in each Block Lifts Equipped with ARD Systems, intercom & CCTV 2 Lifts for Passengers & 1 Freight Lift
FLOORING		ELECTRICAL	
Living, Dining, Master Bedrooms	Elegant High Class DVT/neno Finish Vitrified tiles - 800x800	Exhaust fans	Internal Fire Resistant Copper Wire
All Other Bedrooms & Kitchen	Elegant High Class Neno Finish Vitrified tiles - 800x800	Chimney	In All Toilets & Kitchens Italian Design
Balconies & Utilities	Anti Skid Ceramic Tiles – 300x300 (group 5 hardness level)	WOOD WORK	One Wardrobe in each Bedroom With Italian Design with Premium Hardware
Toilets	Anti Skid Ceramic Tiles – 300x300	OTHERS	
Lobbies /Corridors	Vitrified Tiles – 600x600 /Marble with Granite Combination		Fully Wi-Fi campus with Fibre optical connected to each unit Intercom System Connectivity with all Units 24X7 Power Backup & Water supply IP CCTV At strategic locations for high class surveillance, Security and Monitoring
Floor Staircases	Combination of Marble With Granite		
KITCHEN	Premium Quality Modular Kitchen as per Italian design Black Granite counter with stainless steel sink Provision for Water Purifier Provision for washing machine in Utility Area		
DADO			
Toilet	Designer Digital Ceramic tiles – 600x300 upto 7 feet above floor level		
Kitchen	Designer Glazed Tiles - 300x600 upto 2 feet above counter		



Kailash Palm Street, Panditwari, Near FRI, Chakrata Road, Dehradun Ph.:

Web. :

E-mail :